

# Disclaimer

This resource refers to topical events in the news and is provided for informational and educational purposes only. Events in the news may emotionally impact your learners. You should consider whether this content is appropriate for your situation. It is also your responsibility to ensure that the information/activity this resource contains is safe and appropriate to use in your situation. You should not rely on the material included within this resource and Twinkl does not accept any responsibility if you do.

## Barbie Releases Doll with Hearing Aid

### What types of hearing aid can you get?

- There are a range of different types of hearing aids. These include hearing aids that sit behind the ear, ones that sit just outside the opening of the ear and some smaller ones which fit inside the ear.
- Some people also use implants to help with their hearing.

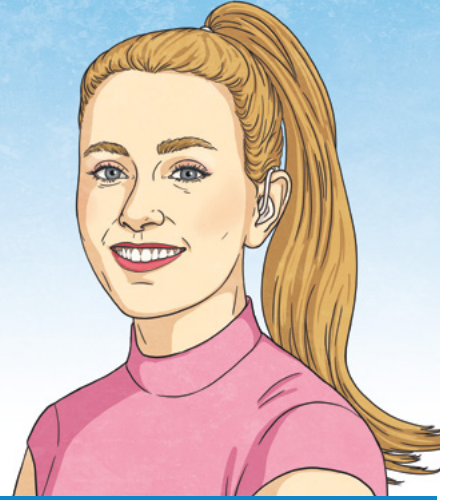


Illustration: A behind-the-ear hearing aid and Rose Ayling-Ellis.

### Rose Ayling-Ellis has teamed up with Mattel to release a Barbie doll with a behind-the-ear hearing aid.

It is part of a range of dolls which have been designed to be more diverse and inclusive.

Rose Ayling-Ellis is a D/deaf actress. She rose to fame by becoming the first-ever D/deaf contestant and winner of *Strictly Come Dancing*. She **advocates** for the D/deaf community and backed the BSL Bill. This saw British Sign Language become recognised as an official language in the UK.

Talking about the new Barbie doll, Rose Ayling-Ellis said: "It's so important for children to be able to see themselves **represented** in the toys they play with."

Rose has used a hearing aid since she was a child. She added: "When I was little, I would draw hearing aids onto my Barbie dolls to make them look like me".

Mattel worked with experts to make sure the hearing aids were accurately portrayed.

Audiologist Dr. Jen Richardson is an expert in hearing care. She said: "I'm beyond thrilled for my young patients to see and play with a doll who looks like them."

As part of the new collection, a Ken doll with

**vitiligo**, a doll with a **prosthetic** leg and one that uses a wheelchair have also been released. Mattel teamed up with a student with vitiligo, a yoga teacher with a prosthetic leg and a model and wheelchair user to celebrate these diverse dolls.

This is the latest step in Mattel making more diverse Barbie dolls. They offer Barbie dolls with a range of skin tones and eye colours as well different hair colours and textures. On top of that, their Barbie dolls come with different body types and disabilities.

Lisa McKnight works for Mattel. She said: "The Barbie brand wholeheartedly believes in the power of representation".

She went on to say children playing with a range of dolls can help them "understand and celebrate the importance of inclusion."

### Glossary

**advocates** Publicly shows support.

**represented** Being portrayed and seen.

**vitiligo** A condition where pale white patches develop on the skin.

**prosthetic** Artificial; fake.

# Questions

1. Find and copy two of the new dolls that Mattel has released.

- 1. \_\_\_\_\_
- 2. \_\_\_\_\_

2. Match up the words to their definitions. One has been done for you.

diverse	A.	Properly and without mistakes.
inclusive	B.	Showing different kinds.
accurately	A.	Everybody being included.
textures	D.	How surfaces of things look and feel.

3. In your own words, explain why Mattel has made these dolls.

---

---

---

4. How do you think it feels for Rose Ayling-Ellis to see the Barbie doll with a hearing aid? Explain your answer.

---

---

---

5. Which of the following alternative headlines best define the article? **(tick two)**

- Rose Ayling-Ellis Supports BSL Bill
- Barbie Makes Diverse Dolls
- Mattel Believes in Representation for All
- Hearing Aids Come in All Shapes and Sizes

6. Who do you think should play with these dolls? Explain your answer.

---

---

---